
Web Site

<http://macro.lsu.edu/>



The screenshot shows the homepage of the Louisiana State University Macromolecular Studies Group server. At the top, there is a navigation bar with links: Home, About Us, Faculty, Courses, Seminars, History, General Info, Science & Technology in Service to the Community, and How to Contact Us. Below the navigation bar is a header section featuring the LSU logo (a red and white building icon) and the text "LSU LOUISIANA STATE UNIVERSITY". To the right of the LSU logo is a circular logo for the "Macromolecular Studies Group" with the text "Macromolecular Studies Group" and "Louisiana State University" around it. Below the header is a main content area with the heading "You have reached Louisiana State University Macromolecular Studies Group server." followed by the text "Most sites should be bookmarked directly, but here are some of the more popular links:". Below this text is a bulleted list of links: "Macromolecular Studies Group (faculty listings, seminars, history, general info)", "Core Courses (401N, 701N) (the 4 core courses)", "Science & Technology in Service to the Community: Courses", "How to Contact Us", "CMC Fall 1997 Program", and "Fall scheduling".

LSU
LOUISIANA STATE UNIVERSITY

Macromolecular Studies Group
Louisiana State University
Baton Rouge, Louisiana 70803

You have reached Louisiana State University Macromolecular Studies Group server.


Most sites should be bookmarked directly, but here are some of the more popular links:

- [Macromolecular Studies Group](#) (faculty listings, seminars, history, general info)
- [Core Courses \(401N, 701N\)](#) (the 4 core courses)
- [Science & Technology in Service to the Community: Courses](#)
- [How to Contact Us](#)
- [CMC Fall 1997 Program](#)
- [Fall scheduling](#)

2


[illegible]

PAL
Located in Room 227 Choppin Hall
(Chemistry)



4

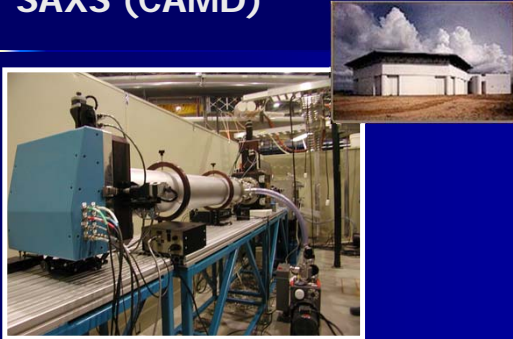
DLS /Zeta Potential



Malvern ZetaSizer Nano ZS

5

SAXS (CAMD)



6

SIZE EXCLUSION CHROMATOGRAPHY (SEC/GPC)

7

ORGANIC MALS GPC



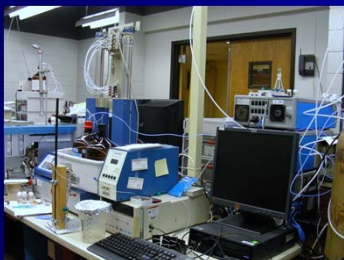
8

Aqueous MALS GPC



9

VISCOSITY-LS-DRI-UV-VIS GPC



10

Asymmetrical Flow Field Flow Fractionation (AF4)



11

THERMAL ANALYSIS

12

TGA



13

DSC-1



14

DSC-2



15

Dielectric Analyzer



16

DMA



17

TMA



18

MISCELLANEOUS

19

SpectroFluorometer



20

UV-Vis-DAD Spectrophotometer



21

Analytical / Micro Balances



22

Work Station



23

Analytical Ultracentrifugation



24
